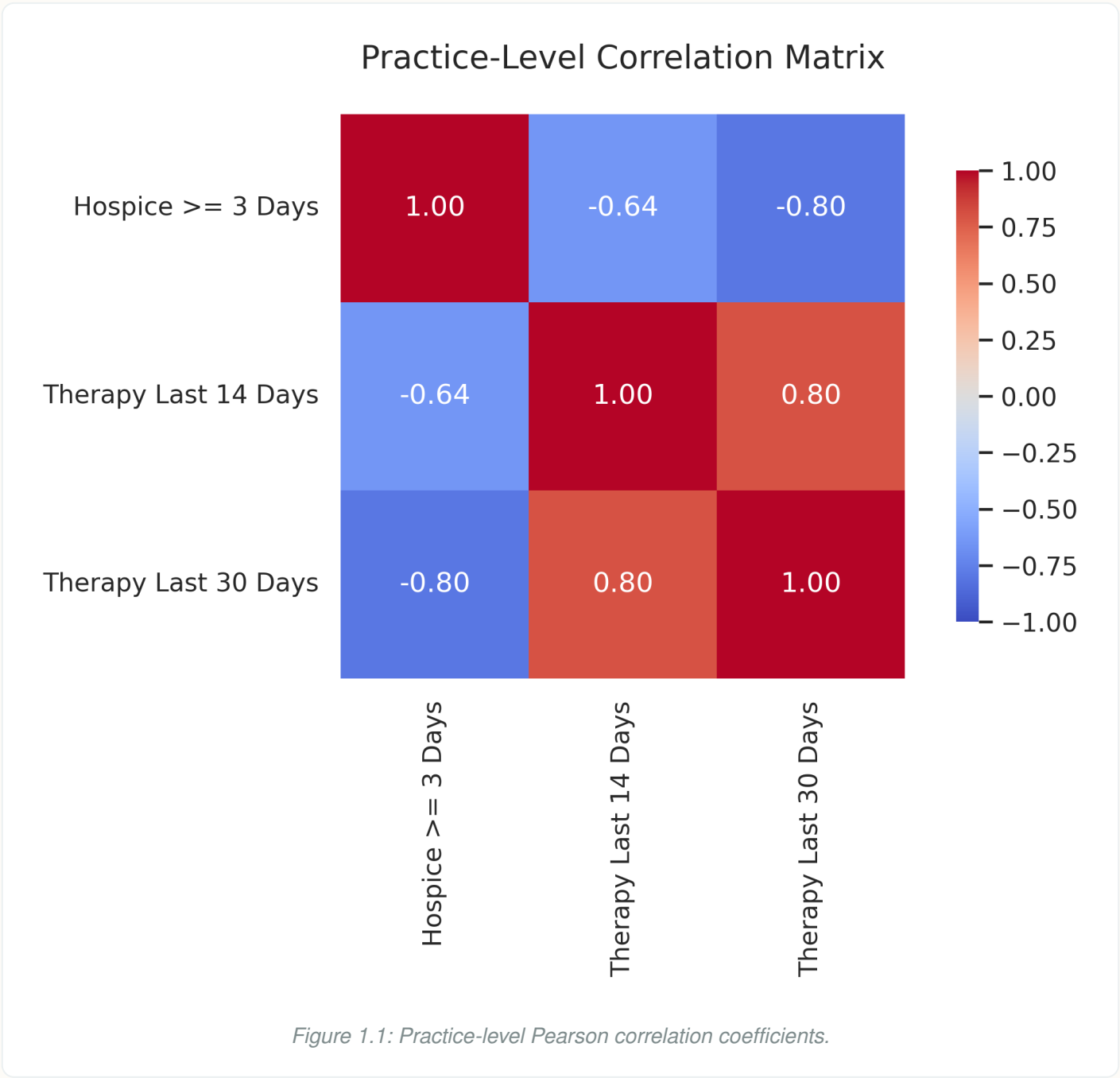


End-of-Life Oncology Measures: Visualizations Report

This report compiles all visualizations generated during the analysis of end-of-life oncology performance measures. The analysis evaluates the relationships between hospice enrollment (≥ 3 Days) and systemic cancer-directed therapy utilization near the end of life (Last 14 and 30 Days).

1. Practice-Level Visualizations (N=10)

These plots illustrate the aggregate practice-level clinical behaviors, showcasing strong inverse relationships between aggressive therapy and timely hospice transition.



Practice-Level Scatterplot Matrix

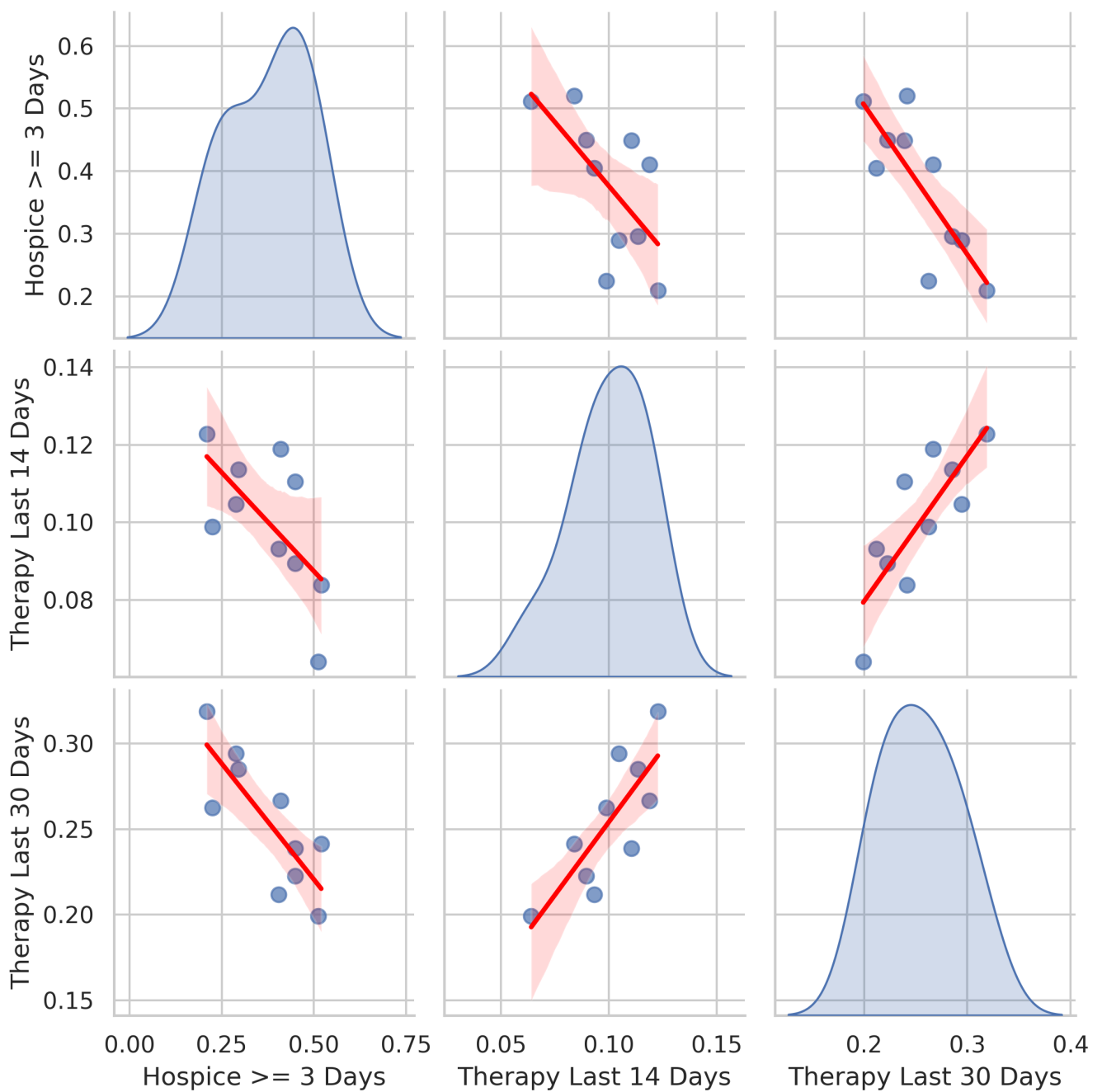


Figure 1.2: Practice-level pairwise scatterplots with regression lines.

2. Physician-Level Visualizations (N=158)

These plots reflect the provider-level data, confirming that the same clinical trade-offs hold true at an individual clinical practice level, with highly significant correlations across a much larger sample size.

Physician-Level Correlation Matrix

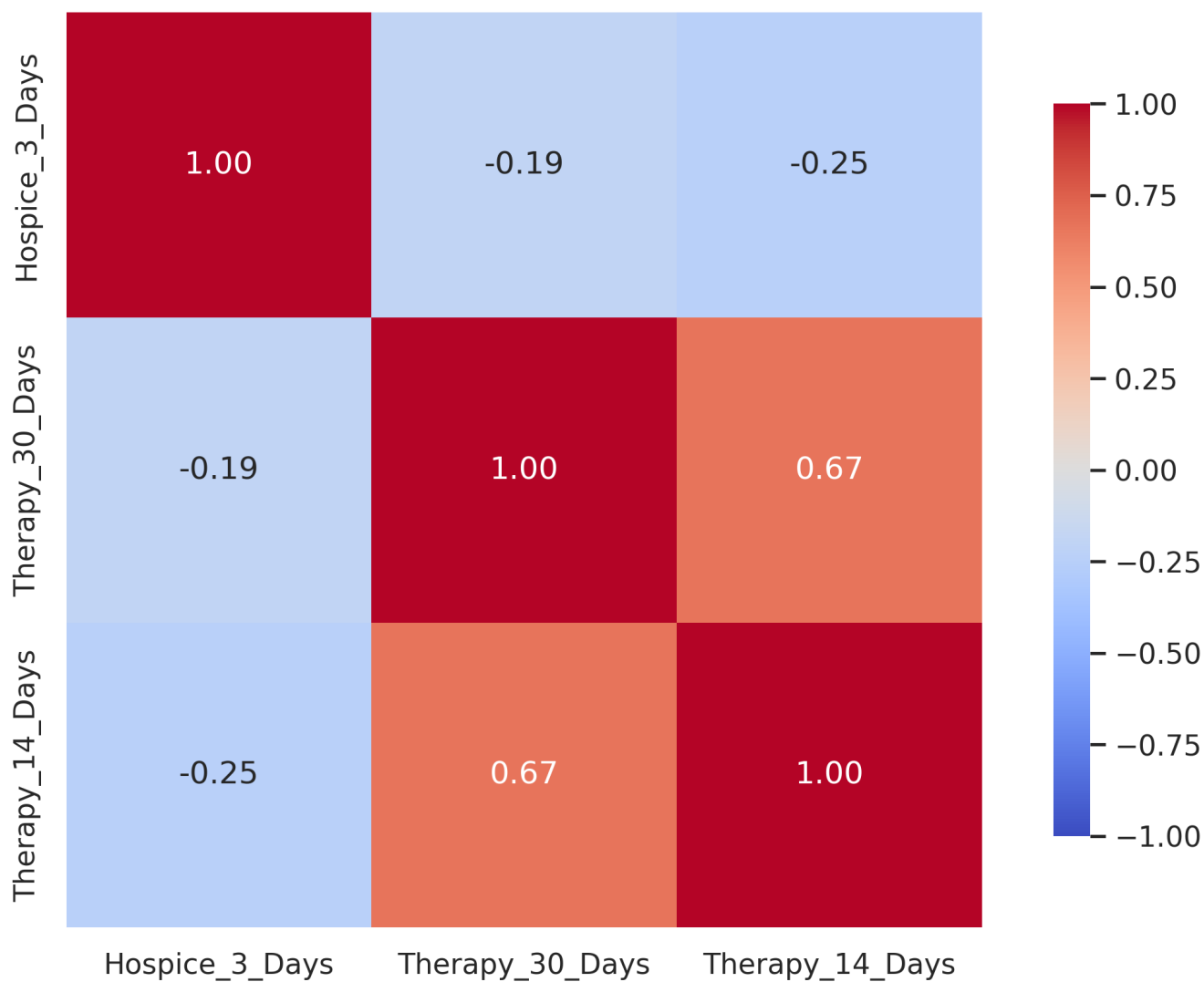


Figure 2.1: Physician-level Pearson correlation coefficients.

Physician-Level Scatterplot Matrix

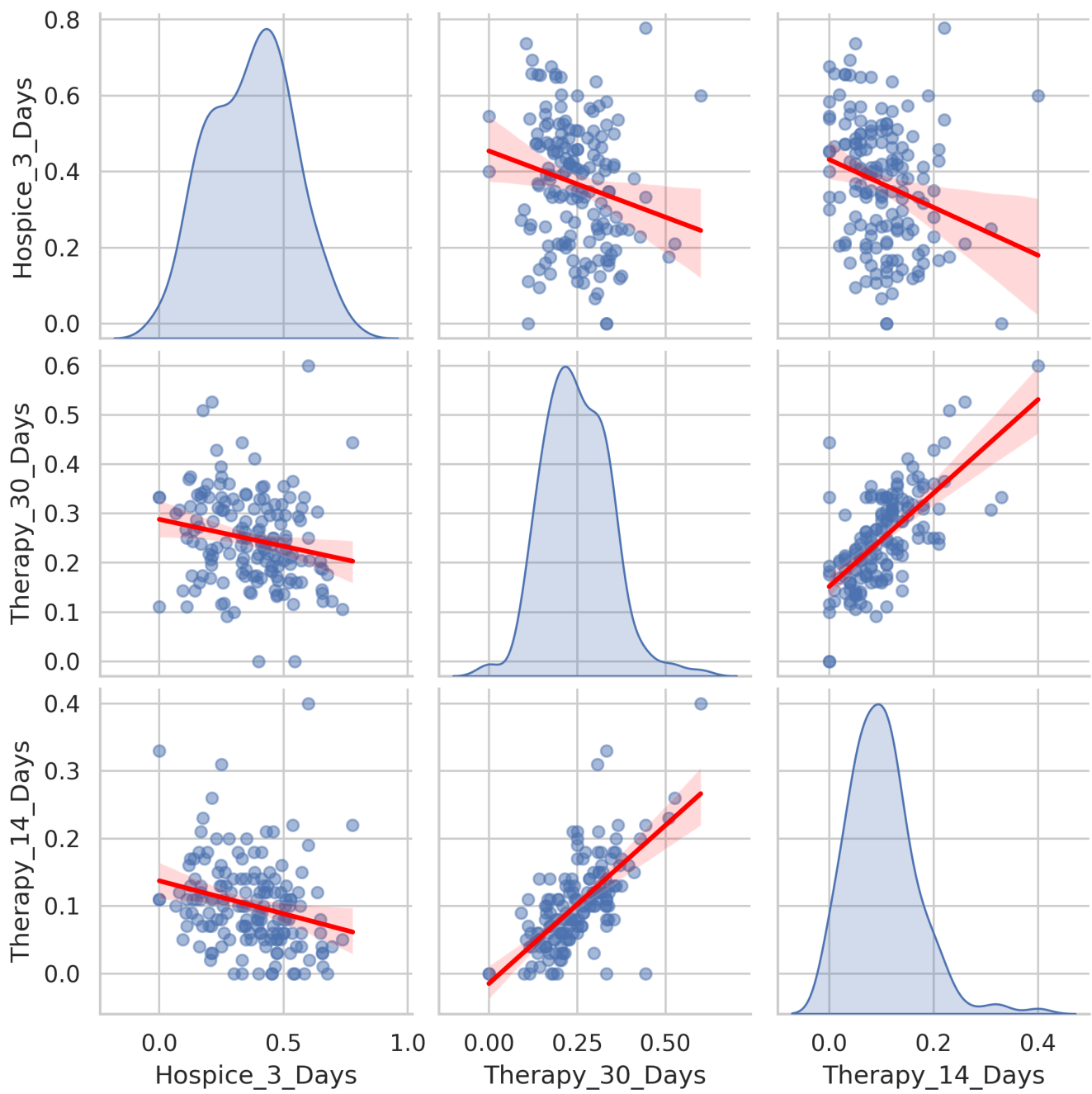


Figure 2.2: Physician-level pairwise scatterplots with regression lines.